



SWITCH PLATE



India International House Ltd.

ADDRESS B-1 MMTC / STC Colony, LSC Navjivan Vihar, NEW DELHI - 110017 (INDIA)

PHONE NO. +91 11 43575156 , 26691550

MOBILE NO. +91 9810517711 , 9811036192

EMAIL abg@skggroup.com , skg@skggroup.com

WEBSITE www.builderhardware.com

SWITCH PLATE

MATERIAL - BRASS

**FINISH - "Satin Nickel / Polished Brass /
Chrome Plated / Antique Brass /
Oil Rubbed Bronze / Antique
Pewter / Polish Nickel /Mottle
Antique Brass**

Plain



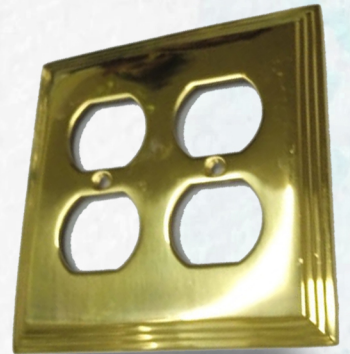
WEIGHT - 0.080gm

**Egg &
Dart**



WEIGHT - 0.122gm

Step



WEIGHT - 0.174gm

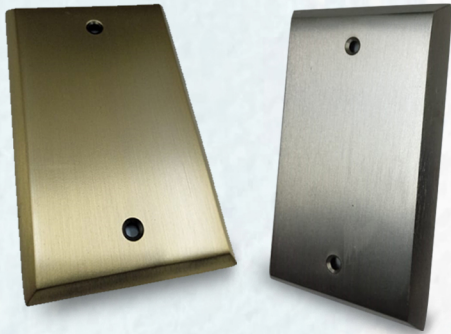
Georgian



WEIGHT - 0.234gm

SWITCH PLATE

Plain



WEIGHT - 0.110gm
FINISH - "Antique Brass /
Satin Nickel"



WEIGHT - 0.110gm
FINISH - "Satin Nickel"



WEIGHT - 0.080gm
FINISH - "Satin Nickel"



WEIGHT - 0.086gm
FINISH - "Oil Rubbed
Bronze/
Chrome Plated"



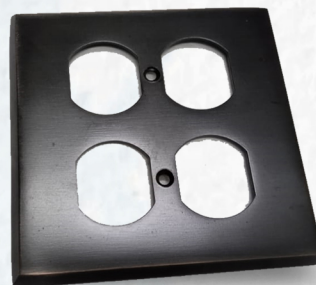
WEIGHT - 0.066gm
FINISH - "Oil Rubbed
Bronze"



WEIGHT - 0.106gm
FINISH - "Mottle Antique
Brass"



WEIGHT - 0.220gm
FINISH - "Mottle Antique
Brass"



WEIGHT - 0.200gm
FINISH - "Oil Rubbed
Bronze"

SWITCH PLATE

Plain



WEIGHT - 0.294gm
FINISH - "Satin Nickel"



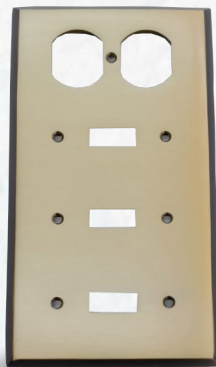
WEIGHT - 0.294gm
FINISH - "Satin Nickel"



WEIGHT - 0.294gm
FINISH - "Mottle Antique Brass"



WEIGHT - 0.290gm
FINISH - "Satin Nickel"



WEIGHT - 0.294gm
FINISH - "Mottle Antique Brass"



WEIGHT - 0.236gm
FINISH - "Oil Rubbed Brass"



WEIGHT - 0.300gm
FINISH - "Satin Nickel"



WEIGHT - 0.336gm
FINISH - "Oil Rubbed Brass"



WEIGHT - 0.534gm
FINISH - "Oil Rubbed Brass"

SWITCH PLATE

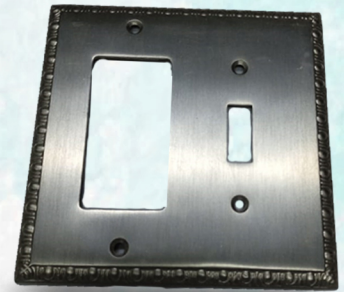
Egg & Dart



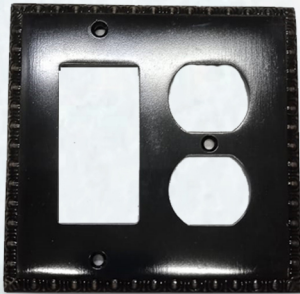
WEIGHT - 0.130gm
FINISH - "Satin Nickel"



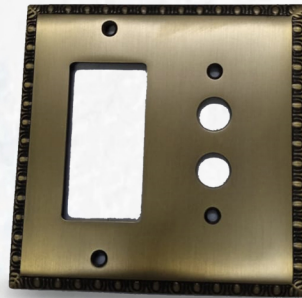
WEIGHT - 0.155gm
FINISH - "Oil Rubbed Bronze"



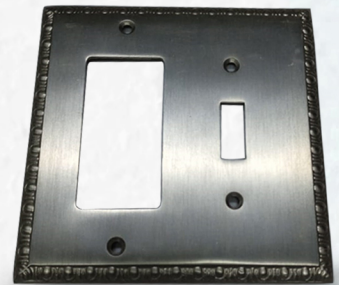
WEIGHT - 0.192gm
FINISH - "Chrome Plated"



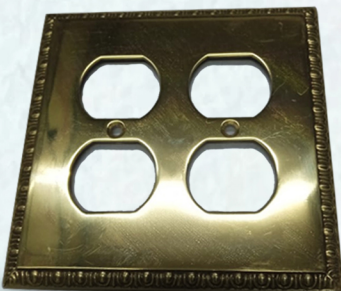
WEIGHT - 0.230gm
FINISH - "Oiled Rubbed Bronze"



WEIGHT - 0.246gm
FINISH - "Antique Brass"



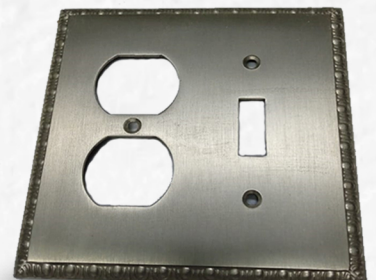
WEIGHT - 0.226gm
FINISH - "Satin Nickel"



WEIGHT - 0.218gm
FINISH - "Polished Brass"

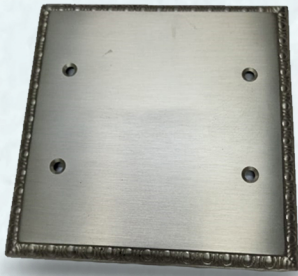


WEIGHT - 0.260gm
FINISH - "Oil Rubbed Bronze"



WEIGHT - 0.250gm
FINISH - "Satin Nickel"

SWITCH PLATE



WEIGHT - 0.284gm
FINISH - "Satin Nickel"



WEIGHT - 0.562 gm
FINISH - "Satin Nickel"



WEIGHT - 0.566 gm
FINISH - "Satin Brass"



WEIGHT - 0.572gm
FINISH - "Antique Brass"



WEIGHT - 0.146gm
FINISH - "Mottle Antique
Brass"



SWITCH PLATE

Step



WEIGHT - 0.160gm
FINISH - "Oil Rubbed Bronze"



WEIGHT - 0.146gm
FINISH - "Oil Rubbed Bronze"



WEIGHT - 0.174gm
FINISH - "Satin Nickel"



WEIGHT - 0.126gm
FINISH - "Polished Brass"



WEIGHT - 0.192gm
FINISH - "Chrome Plated"



WEIGHT - 0.570gm
FINISH - "Oil Rubbed Bronze"



WEIGHT - 0.560gm
FINISH - "Satin Nickel"





SWITCH PLATE



India International House Limited
